



Pont Street, Knightsbridge, SW1

£575 per week

Bedrooms	1
Bathrooms	1
Furnished	Unfurnished
Availability	1st October 2025
Outdoor Space	None
Parking	Residents Permit
Council Tax	Council Tax Band:F (RBKC)

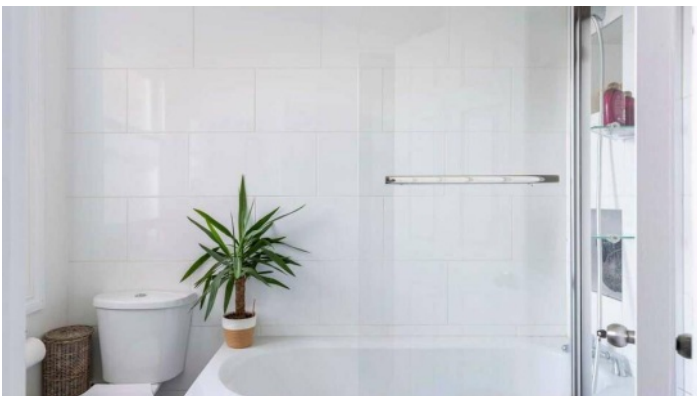
BRIGHT & SPACIOUS ONE BEDROOM APARTMENT

A bright and spacious 4th floor (walk-up) double bedroom apartment situated on the corner of Pont Street and Walton Street in this elegant period building. The apartment has recently been totally refurbished to a high standard. Ideally located close to Knightsbridge and South Kensington with all its many shops and restaurants and transport facilities. 646 sq.ft.

Pictures show tenant's own furniture. The flat is available only unfurnished.

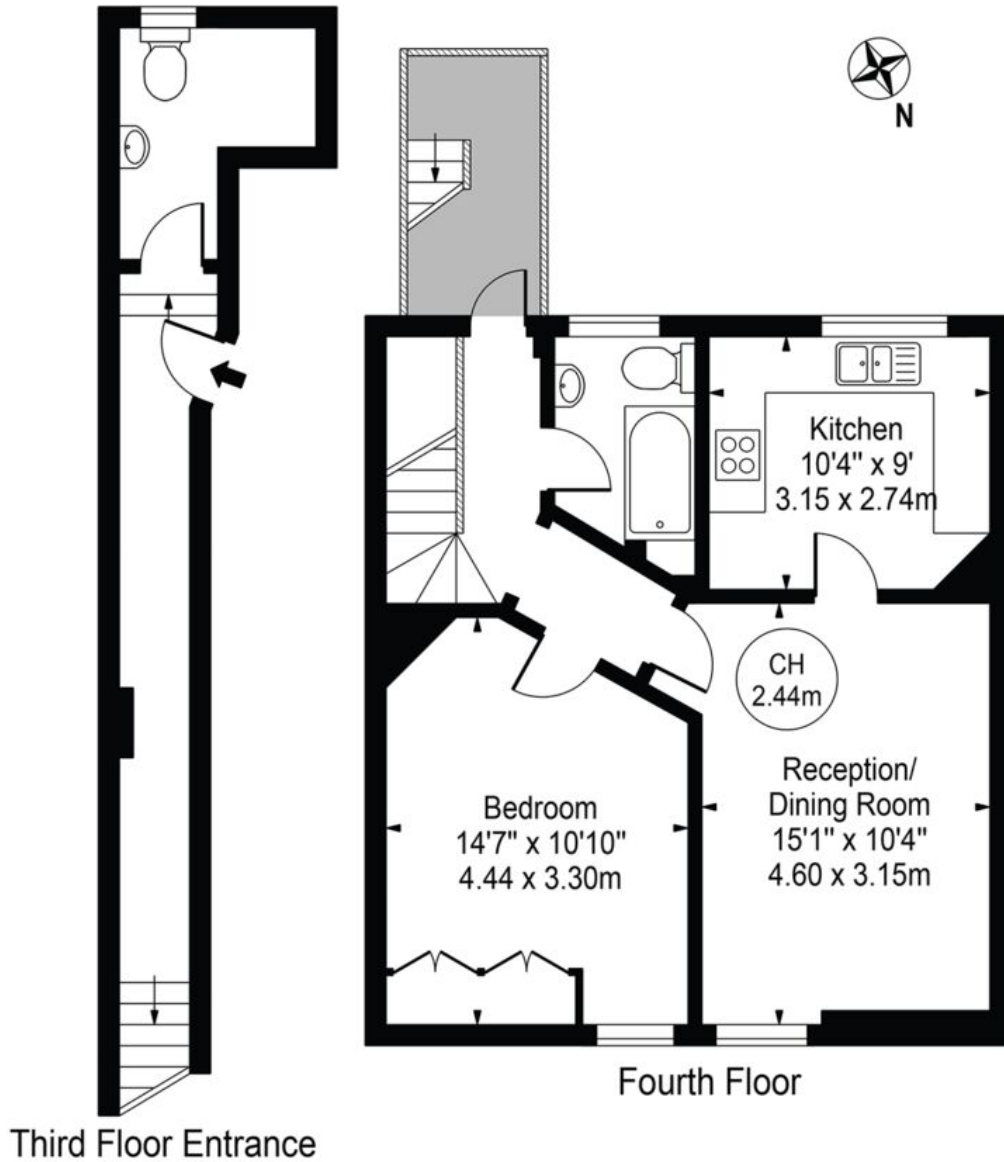
Features

Entrance Hall, Reception/Dining Room, Fully Fitted Kitchen, Double Bedroom, Bathroom, Guest Cloak Room/Utility Room, Roof Terrace.



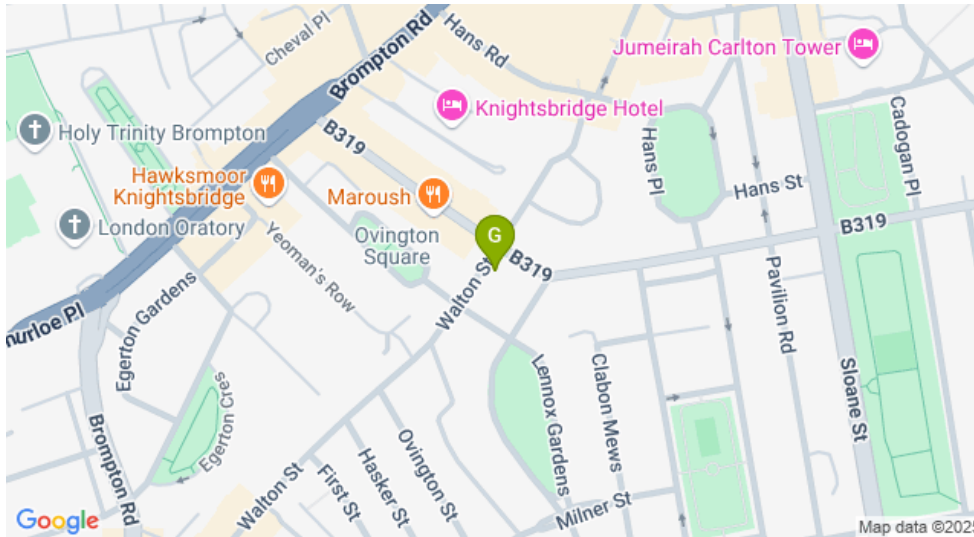
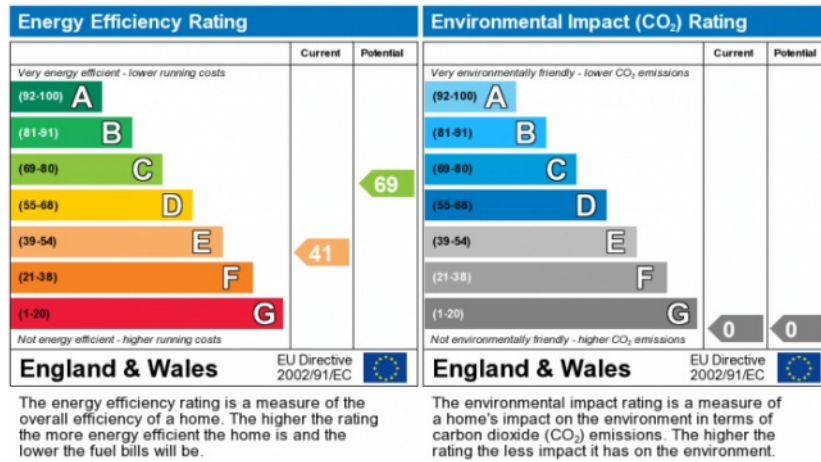
Pont Street

Approx. Gross Internal Area 646 Sq Ft - 60.02 Sq M



For Illustration Purposes Only - Not To Scale

This floor plan should be used as a general outline for guidance only and does not constitute in whole or in part an offer or contract.
 Any intending purchaser or lessee should satisfy themselves by inspection, searches, enquiries and full survey as to the correctness of each statement.
 Any areas, measurements or distances quoted are approximate and should not be used to value a property or be the basis of any sale or let.



INFORMATION FOR TENANTS

After an offer is accepted by the Landlord, which is subject to contract and acceptable references, the first rent and a deposit are payable in advance. Any rent advertised is pure rent.

IMPORTANT NOTICE

Susan Metcalfe Residential, their clients and any joint agents give notice that: 1: They are not authorised to make or give any representations or warranties in relation to the property either here or elsewhere, either on their own behalf or on behalf of their client or otherwise. They assume no responsibility for any statement that may be made in these particulars. These particulars do not form part of any offer or contract and must not be relied upon as statements or representations of fact. 2: Any areas, measurements or distances are approximate. The text, photographs and plans are for guidance only and are not necessarily comprehensive. It should not be assumed that the property has all necessary planning, building regulation or other consents and Susan Metcalfe Residential have not tested any services, equipment or facilities.