



SUSAN METCALFE
RESIDENTIAL



Redcliffe Close, Old Brompton Road, Earl's Court, SW5

£750,000

Bedrooms	1
Bathrooms	1
Surface	551 sqft
Tenure	Leasehold 983 years
Ground Rent	£25
Service Charge	£5,000
Outdoor Space	None
Parking	Residents Permit
Council Tax	Council Tax Band: D (RBKC)

SMART DOUBLE BEDROOM FLAT

A fantastic double bedroom apartment finished to an exacting standard throughout. The property is situated on the first floor (with lift) of this smart portered building on Old Brompton Road which is extremely popular with young professionals, first time buyers and buy-to-let investors. The property is well configured with a double bedroom, a spacious and light reception room. There is also open plan modern kitchen with a breakfast bar and generous storage in the bedroom. The amenities and transport links of Earl's Court and West Brompton Underground stations are moments away. 551 sq.ft.

Features

Entrance Hall, Reception Room, Fully Fitted Open Plan Kitchen, Double



10 HOLLYWOOD ROAD CHELSEA SW10 9HY
020 7581 3349 www.susanmetcalfe.com info@susanmetcalfe.com





SUSAN METCALFE
RESIDENTIAL

Bedroom, Bathroom, Lift, Porter, Council Tax Band: D (Rbkc)



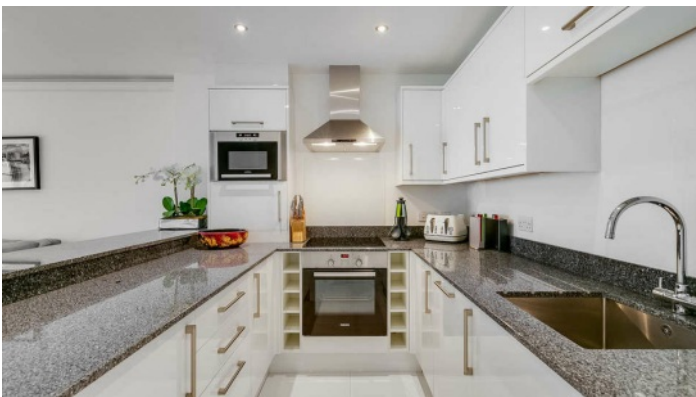
10 HOLLYWOOD ROAD CHELSEA SW10 9HY

020 7581 3349 www.susanmetcalfe.com info@susanmetcalfe.com





SUSAN METCALFE
RESIDENTIAL



10 HOLLYWOOD ROAD CHELSEA SW10 9HY
020 7581 3349 www.susanmetcalfe.com info@susanmetcalfe.com





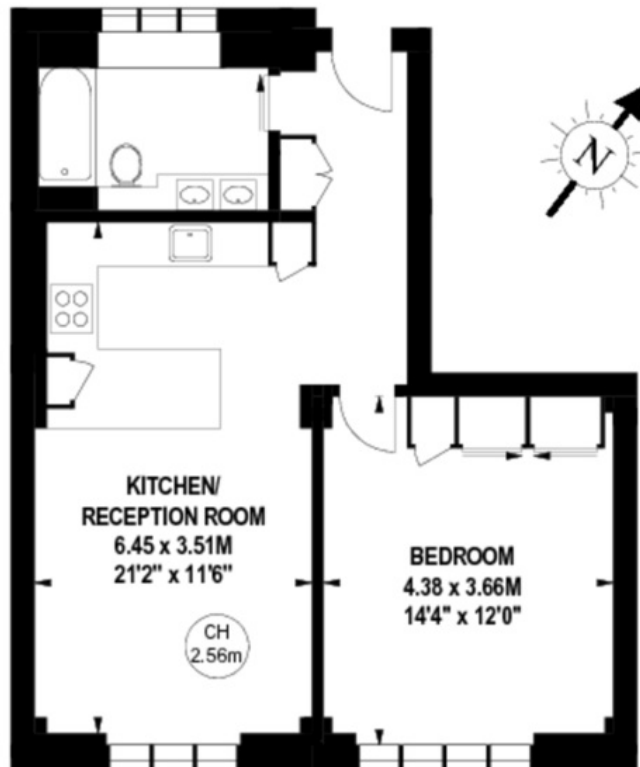
SUSAN METCALFE
RESIDENTIAL

Redcliffe Close, SW5

Approximate gross internal area

51.19 sq m / 551 sq ft

Key :
CH - Ceiling Height



First Floor

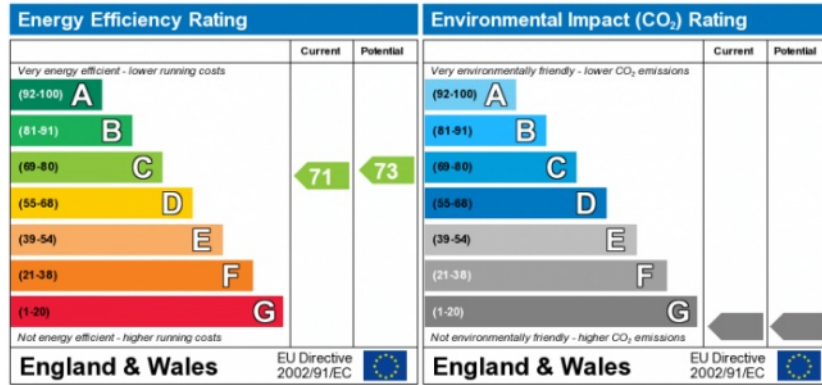
The floor plan is not to scale and measurements and areas shown are approximate and therefore should be used for illustrative purposes only. The plan has been prepared in accordance with the RICS code of Measuring Practice and whilst we have confidence in the information produced, it must not be relied on.

If there is any aspect of particular importance, you should carry out or commission your own inspection of the property.

Copyright of FeaturePRO.



SUSAN METCALFE
RESIDENTIAL



The energy efficiency rating is a measure of the overall efficiency of a home. The higher the rating the more energy efficient the home is and the lower the fuel bills will be.

The environmental impact rating is a measure of a home's impact on the environment in terms of carbon dioxide (CO₂) emissions. The higher the rating the less impact it has on the environment.



IMPORTANT NOTICE

Susan Metcalfe Residential, their clients and any joint agents give notice that: 1: They are not authorised to make or give any representations or warranties in relation to the property either here or elsewhere, either on their own behalf or on behalf of their client or otherwise. They assume no responsibility for any statement that may be made in these particulars. These particulars do not form part of any offer or contract and must not be relied upon as statements or representations of fact. 2: Any areas, measurements or distances are approximate. The text, photographs and plans are for guidance only and are not necessarily comprehensive. It should not be assumed that the property has all necessary planning, building regulation or other consents and Susan Metcalfe Residential have not tested any services, equipment or facilities.

10 HOLLYWOOD ROAD CHELSEA SW10 9HY



020 7581 3349

www.susanmetcalfe.com

info@susanmetcalfe.com

